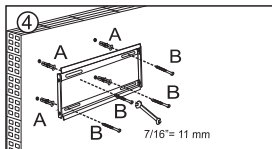
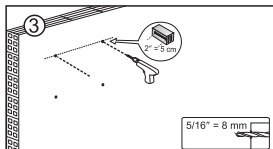
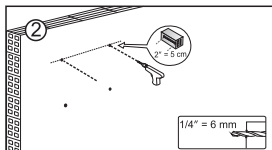
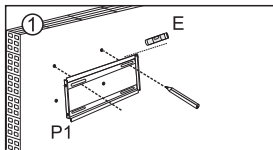
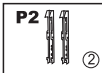
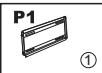
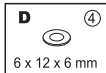
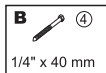


# Manual de instruções/Instruction manual/Manual de instrucciones



## PARA TV VESA 75 / 100 ATÉ 200 X 200 FOR VESA TV 75 / 100 UP TO 200 X 200 PARA TV VESA 75/100 HASTA 200 X 200

- ⑤ Utilize uma das 4 opções oferecidas (C), conforme a furação da sua TV.

Use one of the 4 available options (C), according to the holes on your TV set.

Utilice una de las 4 opciones ofrecidas (C), conforme la perforación de su TV.

